

# Gain Programming Using a MEAS Pressure Sensor

## INTRODUCTION

MEAS offers a broad line of pressure transducers with low level output, temperature compensation, and a built-in gain programming resistor. This laser trimmed resistor programs the gain of an external (customer provided) amplifier to normalize the pressure sensitivity variation of the sensor. This allows the output of the amplifier to be independent of the sensor used, providing interchangeability and high level output at very low cost. This feature is available on all HIT, TO-8, and isolated diaphragm (ISO) products. Please refer to the individual product data sheets for more information.

## BASIC CIRCUIT

The effective electrical model of the transducer, together with a basic signal conditioning circuit, is shown in Figure 1.

The pressure sensor is a fully active Wheatstone bridge which has been temperature compensated and offset adjusted by means of thick film, laser trimmed resistors. The excitation to the bridge is a constant current which is supplied through the +EX and -EX pins. The low-level bridge output is at +O and -O, and the amplified span is by the gain programming resistor (r).

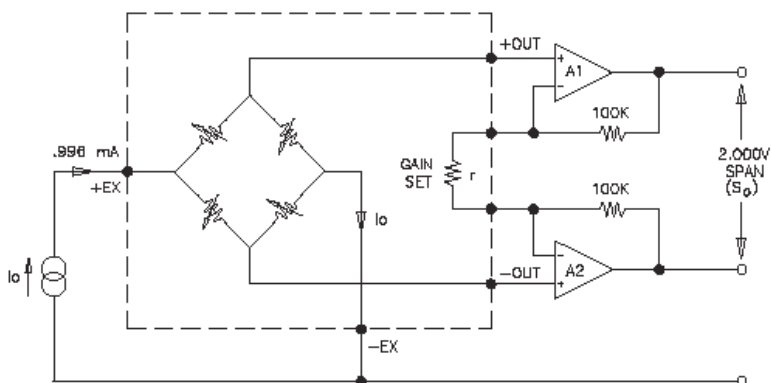


Figure 1 - Basic Configuration Gain - Programming Interchangeable Sensor

Resistor r is laser trimmed for each unit using the following algorithm:

$$r = \frac{200S_i}{2-S_i} \quad [1]$$

# Gain Programming Using a MEAS Pressure Sensor

Where:  $S_i$  - sensor span value (V) at a reference excitation current ( $I_0 = 0.996$  mA)  
 $r$  - resistance in ( $k\Omega$ )

The output span,  $S_o$ , at the differential output of amplifiers A1- A2 (see Figure 1) is then programmed as follows:

$$S_o = AS_i \left( \frac{r + 2R}{r} \right) = 2A \left[ \frac{R}{100} + \frac{S_i(100-R)}{200} \right] \quad [2]$$

Where:  $A = I / I_0$ , ratio of excitation current  $I$  to reference current  $I_0$  (Figure 1)  
 $R$  - feedback resistors, in [ $k\Omega$ ]  
 $S_i$  - sensor span at the input of the amplifier

If 100k feedback resistors are used, the expression for output span is simplified to:

$$S_o = 2A \quad [3]$$

and is constant for all sensors independent of sensor span  $S_i$ . The output span is also independent of the pressure range of the sensor. For other values of the feedback resistors ( $R$ ), the output span ( $S_o$ ) will vary with the sensor span ( $S_i$ ). Assuming  $I = I_0$ , we can calculate  $S_o$  variations.

**Table 1. Output Span (SO) Variation**

R	SO( $S_i=40$ mV)	SO( $S_i=90$ mV)	SO variation [ $\pm\%$ ]
50 K	1.0200	1.0450	1.23
75 K	1.5100	1.5225	0.41
99 K	1.9804	1.9809	0.01
100 K	2.0000	2.0000	0.00
101 K	2.0196	2.0191	0.01
200 K	3.9600	3.9100	0.63
500 K	9.8400	9.6400	1.02

As shown in Table 1, a large deviation from the optimum feedback resistance of 100 k can be tolerated while still maintaining transducer interchangeability. For the optimum feedback resistance (100 k), calibration accuracy is a function of the accuracy of the excitation current, feedback resistors and sensor trimming. The inaccuracy caused by the excitation current and feedback resistors can be made negligible by the use of precision components. Therefore without pressure testing, a 1% system accuracy can be achieved. The standard gain programming resistor,  $r$ , has a TCR 50 ppm/ $^{\circ}C$  and a trimming range of 2.5 to 12.5  $k\Omega$ . For volume orders, a custom trimming algorithm can be made to achieve any desired output span.

# Gain Programming Using a MEAS Pressure Sensor

## SIMPLE SIGNAL CONDITIONING CIRCUIT

The signal conditioning circuit shown in Figure 2 provides a precision constant current source for sensor excitation and an instrumentation amplifier with the gain programmed by sensor feedback resistor  $r$ . To correct for pressure non-linearity or to generate output options other than 0-5V please refer to Technical Note TN-001, "Signal Conditioning for IC Pressure Sensors."

The current source is controlled by the 1% band-gap reference diode, VR. The reference current  $I_o$  is defined by:

$$I_o = (E_o - e_o)/R_2 \quad [4]$$

Where:  $E_o$  - diode reference voltage: 1.235V  $\pm$ 1% (LT1034-1.2 or LT1004-1.2)

$e_o$  - offset of amplifier A1

$R_2$  - feedback resistor

Selecting amplifier A1 with an offset voltage below 1 mV and a  $\pm$ 1% tolerance of resistor  $R_2$  delivers current  $I_o = 0.996$  mA with a typical accuracy of 1.08%.

The first differential stage of the instrumentation amplifier A2-A3 may have a zeroing potentiometer (P). For OP227 amplifiers, the zero range is typically 4 mV in reference to the input with a differential offset below 0.5 mV. This leaves about 3.5 mV zeroing range for the compensation of the sensor offset which typically is below 1 mV.

The second stage of the amplifier provides additional amplification  $R_8/R_5$  and translates the differential floating voltage from the first stage into a single ended output voltage. Modifying equation [3] the expression for overall span (S) can be found as follows:

$$S = 2 \cdot A \cdot R_8 / R_5 = 5.000V @ A = 1 \quad [5]$$

The overall accuracy of the span is effected by the accuracy of feedback resistors  $R_3$  through  $R_8$ .

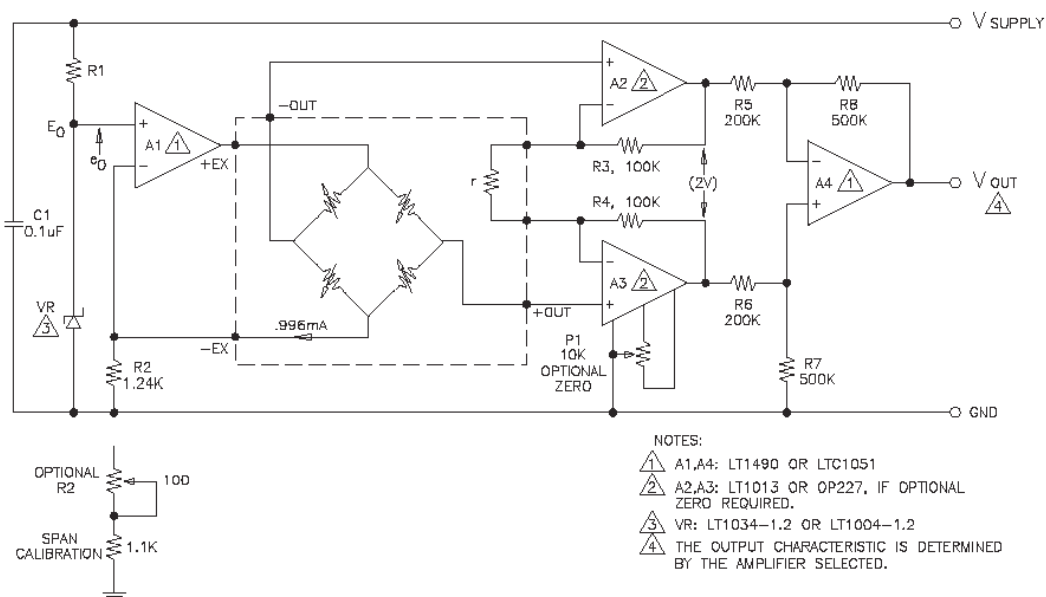
Using 0.1% resistors such as Mepco/Electra 5063Z, a typical gain error will be about 0.24%. The accuracy error may be decreased when matched thin film resistors are used such as Beckman 694-3-A. The combined span error of the entire signal conditioning circuit at a reference temperature will then typically be about 1.1% without any adjustment or pressure testing. This will be superimposed on the sensor's accuracy of 1%.

If additional calibration and normalization are desired, resistor  $R_2$  can be replaced with a series combination of a potentiometer and a resistor (Figure 2). The potentiometer can be adjusted to set the bridge excitation current (I) to achieve the exact span voltage (S) with full scale pressure applied to the sensor.

# Gain Programming Using a MEAS Pressure Sensor

If no pressure source is available, the gain error of the amplifier can be reduced by using the procedure outlined below. This method may be used instead of using the precision resistors discussed above for R2 through R8. The sensor span error of 1% will remain however. Calibration procedure:

- replace resistor r with an external resistor 7.50Ωk 0.1%
- check gain K of the instrumentation amplifier and calculate the gain ratio X (in reference to the ideal gain  $K_O = 69.028V/V$ ) where  $X = K/K_O$
- set current  $I_o = 0.996/X(\text{mA})$  by adjusting the potentiometer, thus completing calibration.



**Figure 2 - Simple Signal Conditioning Circuit**

Assuming a 6.4 kΩ (50°C) maximum bridge resistance, a 0.996 mA bridge current and a 1.2V diode reference voltage, it follows that the maximum output voltage of amplifier A 1 can approach 7.7V. Also, the positive saturation voltage at 1 mA output current for the LTC1051 amplifier is 0.5V. Therefore, the minimum excitation voltage, which is a function of the current source and amplifiers used, would be 8.2V (7.7V + 0.5V) for the LTC1051. For the LT1490, the minimum excitation voltage should be 7.9V.

The maximum excitation voltage is limited by the voltage handling characteristics of the specific amplifier used.

# Gain Programming Using a MEAS Pressure Sensor

---

## ADDITIONAL INFORMATION

---

For a detailed discussion of the compensation circuit, and for output voltages other than 0-5V, please refer to Application Notes APP-01001 and APP-01005.

---

## ORDERING INFORMATION

---

### NORTH AMERICA

Measurement Specialties  
45738 Northport Loop West  
Fremont, CA 94538  
Tel: 1-800-767-1888  
Fax: 1-510-498-1578  
Sales: [pfg.cs.amer@meas-spec.com](mailto:pfg.cs.amer@meas-spec.com)

### EUROPE

Measurement Specialties  
(Europe), Ltd.  
26 Rue des Dames  
78340 Les Clayes-sous-Bois, France  
Tel: +33 (0) 130 79 33 00  
Fax: +33 (0) 134 81 03 59  
Sales: [pfg.cs.emea@meas-spec.com](mailto:pfg.cs.emea@meas-spec.com)

### ASIA

Measurement Specialties  
(China), Ltd.  
No. 26 Langshan Road  
Shenzhen High-Tech Park (North)  
Nanshan District, Shenzhen 518107  
China  
Tel: +86 755 3330 5088  
Fax: +86 755 3330 5099  
Sales: [pfg.cs.asia@meas-spec.com](mailto:pfg.cs.asia@meas-spec.com)

The information in this sheet has been carefully reviewed and is believed to be accurate; however, no responsibility is assumed for inaccuracies. Furthermore, this information does not convey to the purchaser of such devices any license under the patent rights to the manufacturer. Measurement Specialties, Inc. reserves the right to make changes without further notice to any product herein. Measurement Specialties, Inc. makes no warranty, representation or guarantee regarding the suitability of its product for any particular purpose, nor does Measurement Specialties, Inc. assume any liability arising out of the application or use of any product or circuit and specifically disclaims any and all liability, including without limitation consequential or incidental damages. Typical parameters can and do vary in different applications. All operating parameters must be validated for each customer application by customer's technical experts. Measurement Specialties, Inc. does not convey any license under its patent rights nor the rights of others.